



MODEL:Φ8mm Coreless DC Motor

输出功率：约0.1~3.0W
贵金属电刷空心杯直流马达

OUTPUT:APPROX0.1~3.0W
Precious Metal-brush Coreless DC Motor

典型应用：
遥控模型
电动玩具
电子产品

Typical Applications：
RC Models
Electronic toys
Mini electronic products

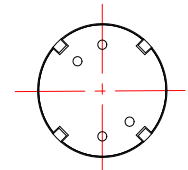
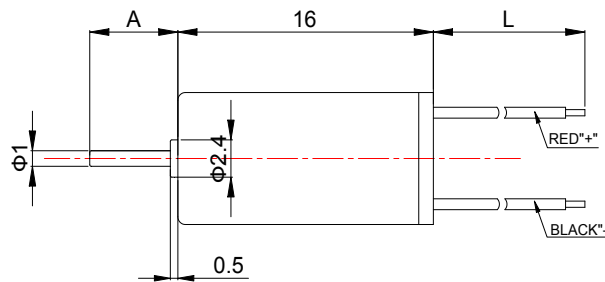
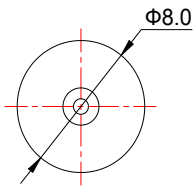


1.OUTLINE DRAWING:

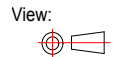
UNIT:MM

816-Q

DIRECTION OF ROTATION
CW

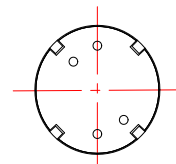
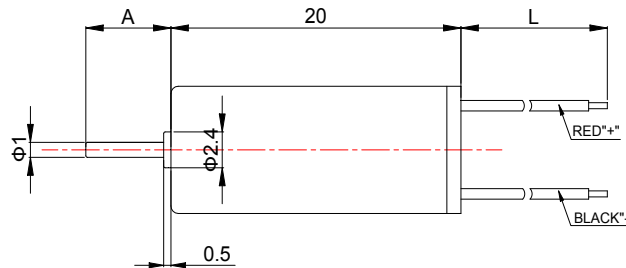
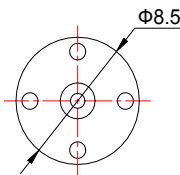


WEIGHT:4.1g(Approx)

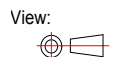


8520-Q

DIRECTION OF ROTATION
CW



WEIGHT:5.1g(Approx)



Customizable Parameters:

1. Length A and L
2. Electric Performance
3. Direction of Rotation
4. Eccentric Wheel is available

2.MOTOR PERFORMANCE :

MODEL	VOLTAGE		NO LOAD		AT MAXIMUM EFFICIENCY					STALL		
	OPERATING RANGE	NOMINAL V	SPEED rpm	CURRENT A	SPEED rpm	CURRENT A	TORQUE g.cm	TORQUE mN.m	OUTPUT W	TORQUE g.cm	TORQUE mN.m	CURRENT A
0816-Q-1	2.0~4.5	4.2	14500	0.012	12400	0.06	1.4	0.14	0.18	9.50	0.93	0.35
0816-Q-2	2.0~4.0	3.2	37000	0.1	32000	0.57	3.9	0.38	1.28	28.00	2.75	3.6
0816-Q-3	3.0~8.0	7.2	15000	0.08	12400	0.035	1.3	0.13	0.17	8.80	0.86	0.2
8520-Q-1	1.5~4.5	4.2	42000	0.076	31800	0.58	4.2	0.41	1.37	36.50	3.58	4.45
8520-Q-2	1.5~4.0	3.7	52000	0.18	45150	1.18	5.2	0.51	2.41	39.50	3.88	7.8
8520-Q-3	1.5~4.0	3.4	40000	0.1	35600	0.74	3.9	0.38	1.42	36.00	3.53	6.4